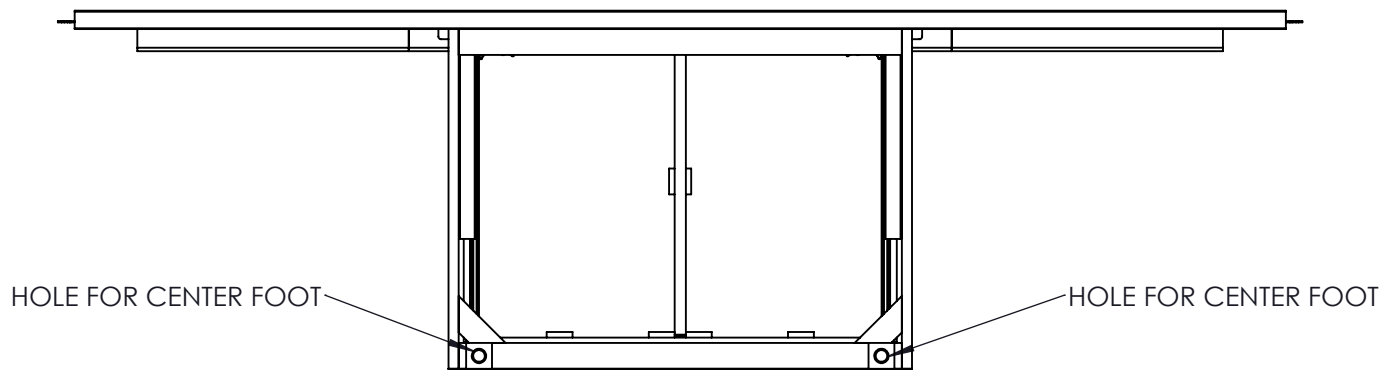
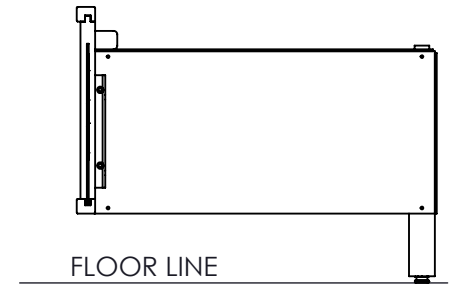
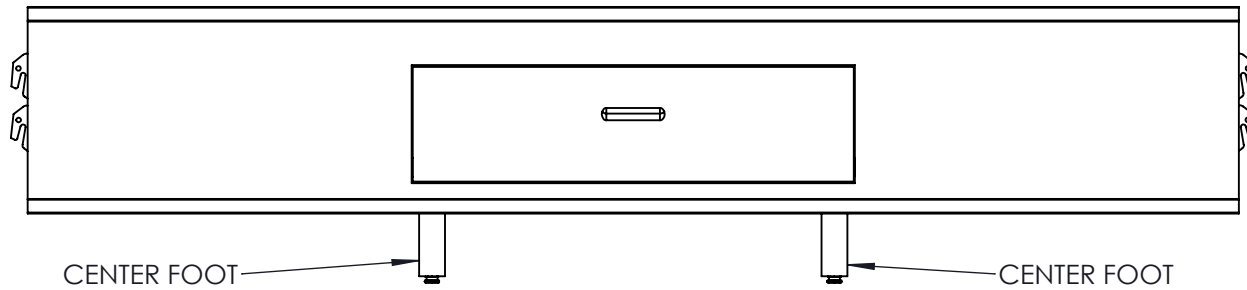


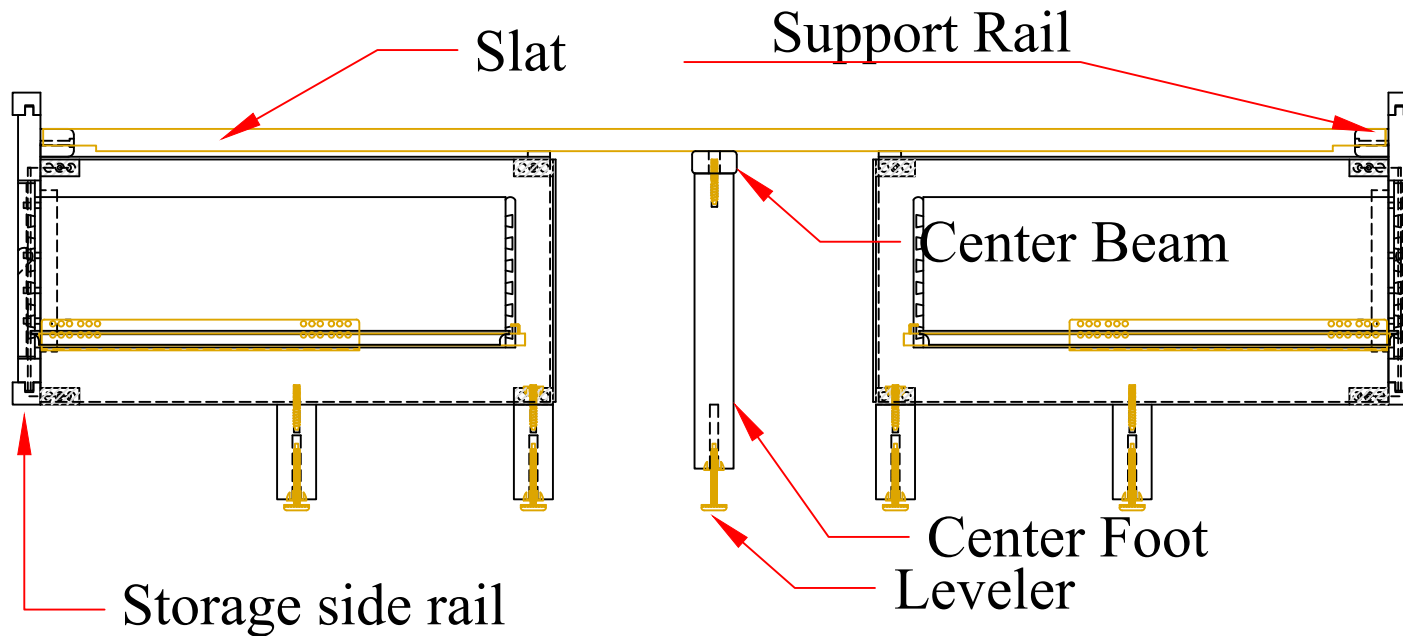
3000-24CA/CB & 3000-44CA/CB Perfect Balance Single Drawer Storage Siderail Center Foot Installation

1. Locate the 2 center feet as shown.
2. Flip the storage side rail onto its backside.
3. Locate the 2 holes on the bottom of the storage side rail drawer box assembly.
(Hole locations shown in bottom drawing)
4. Thread the 2 center center feet into the threaded inserts until tight.
5. Assemble the side rail to the headboard and footboard, adjust the levelers on the bottom of the center feet to ensure the drawer box is level and the levelers are touching the floor.



Center beam and center foot installation

1. Lay all of the slats in the notches in the support rails
2. Screw the center beam to the bottom of the slats using the 3 screws provided
3. Screw the center feet into the threaded inserts in the center beam until tight
4. Turn the leveler in the bottom of the center foot until it reaches the floor and is snug to the floor



End view of storage side rail, slat and center feet